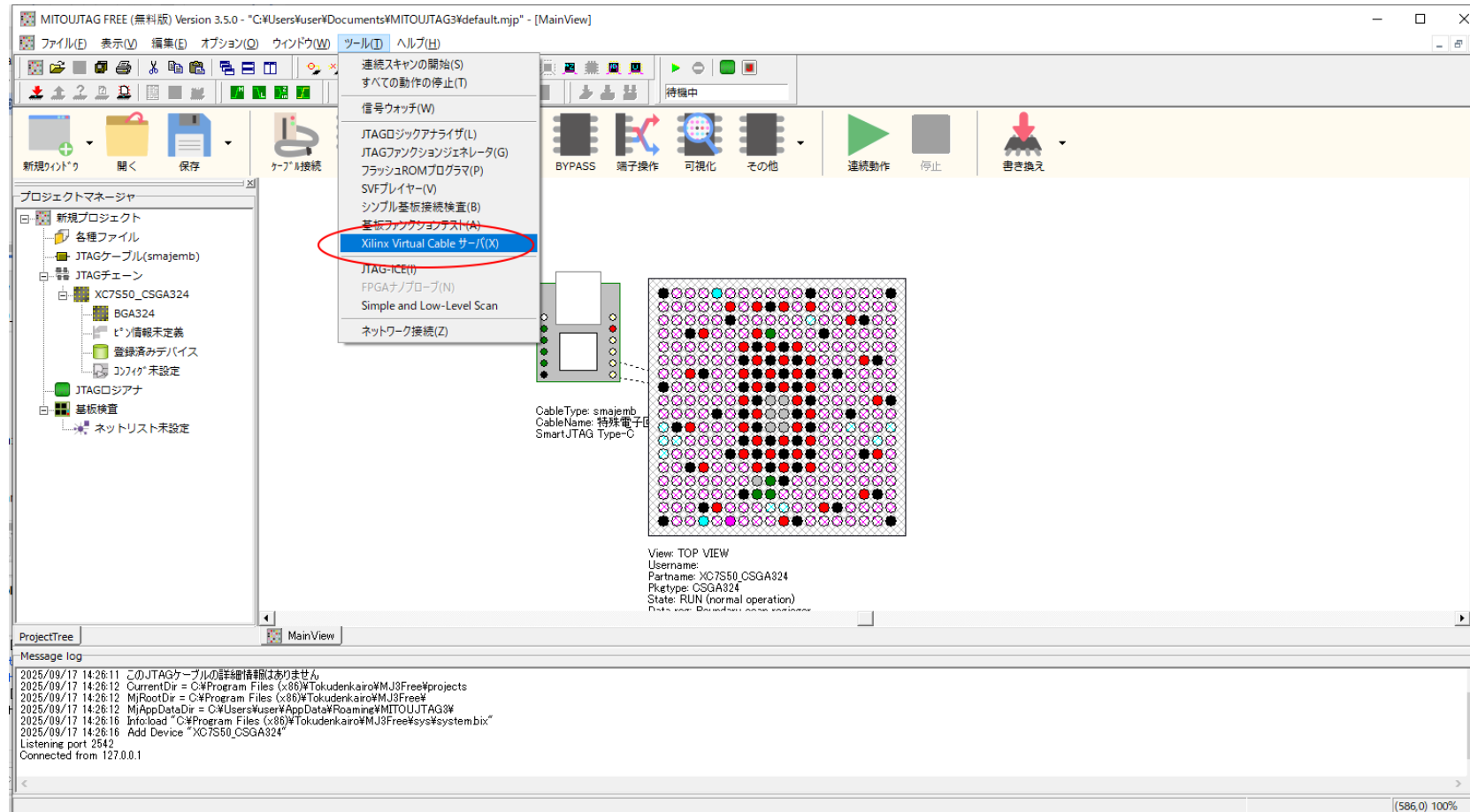


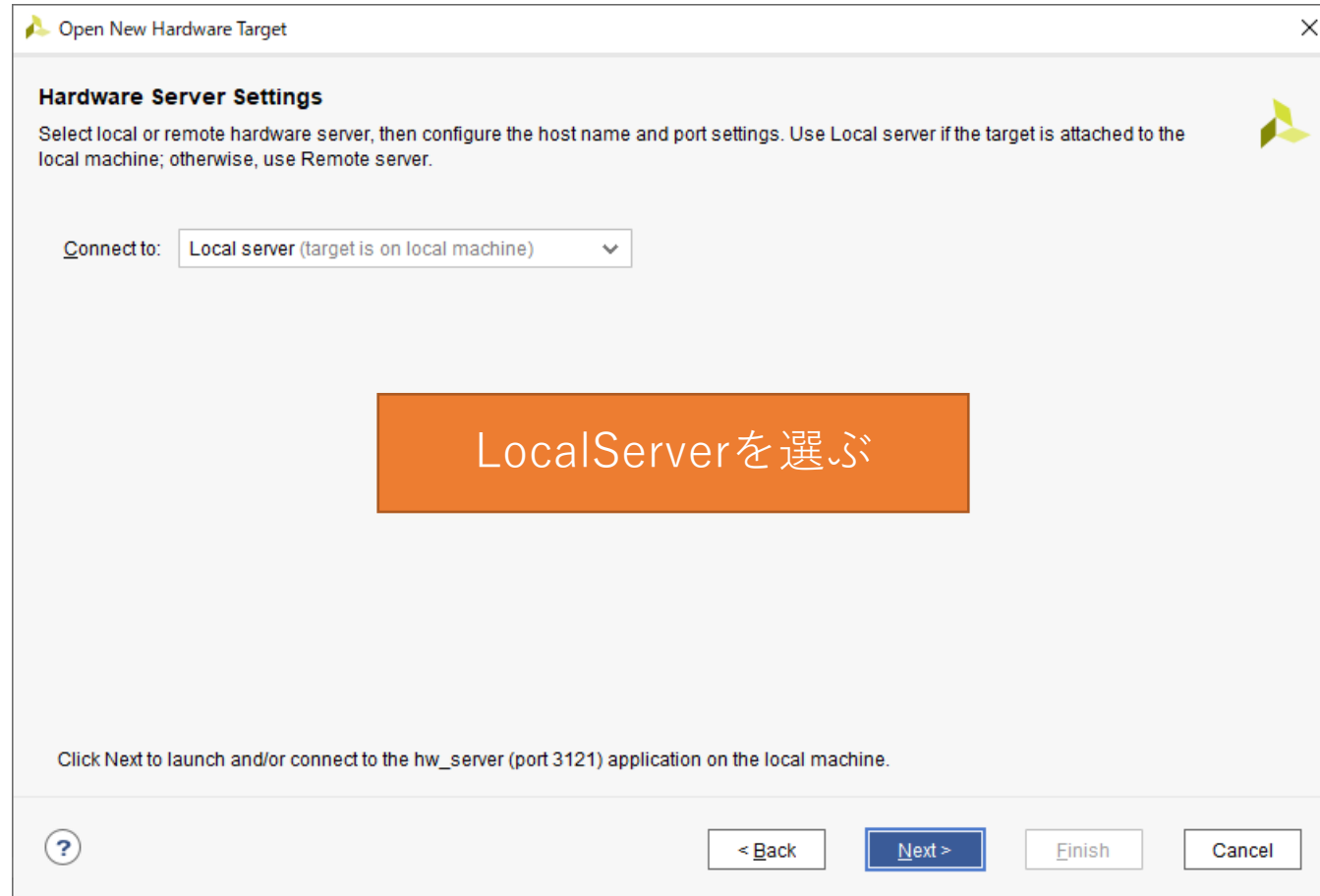
MITOUJTAGを通じた Vivadoからの操作

2025/9/17 特殊電子回路(株)

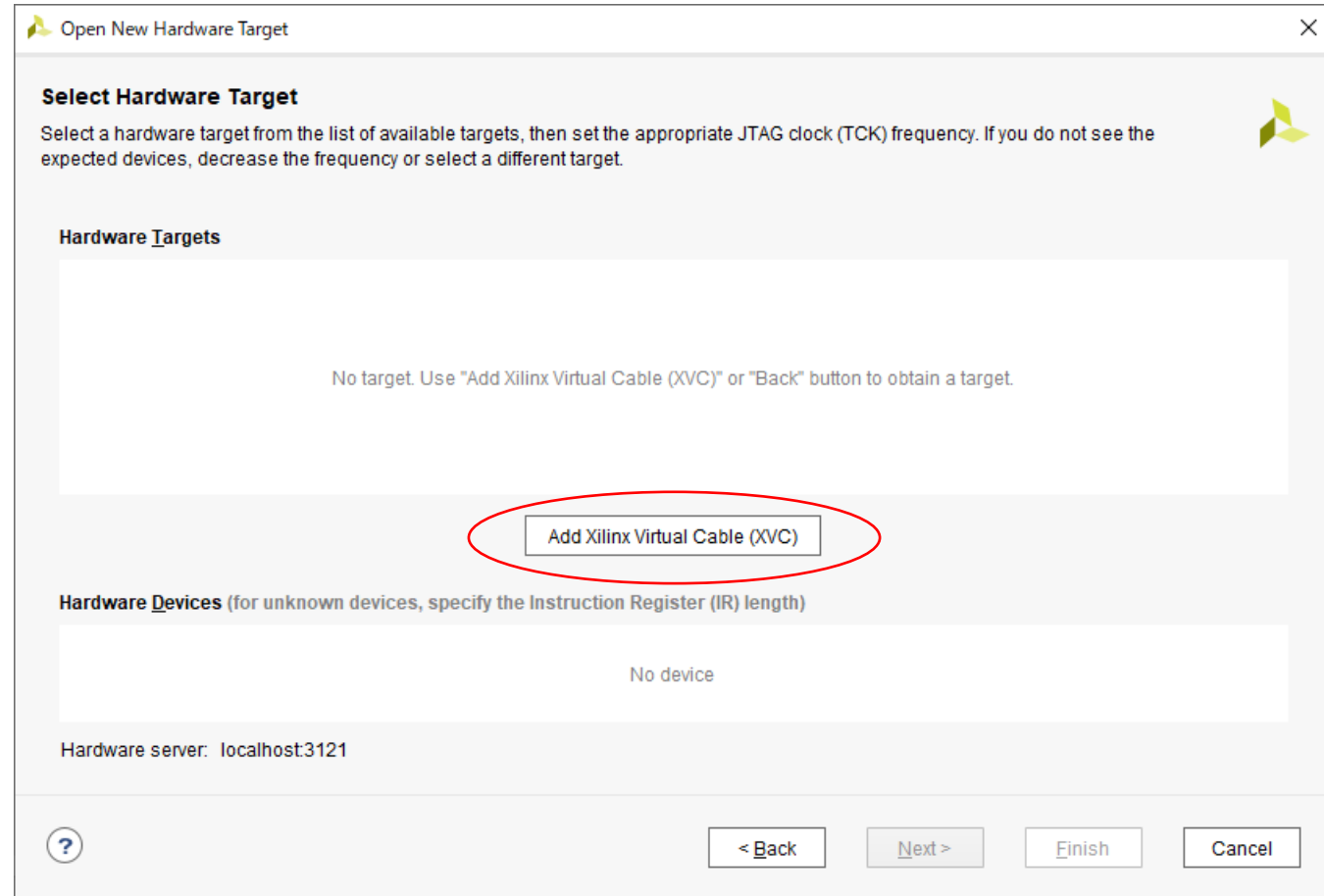
MITOUJTAGのXVCサーバを起動



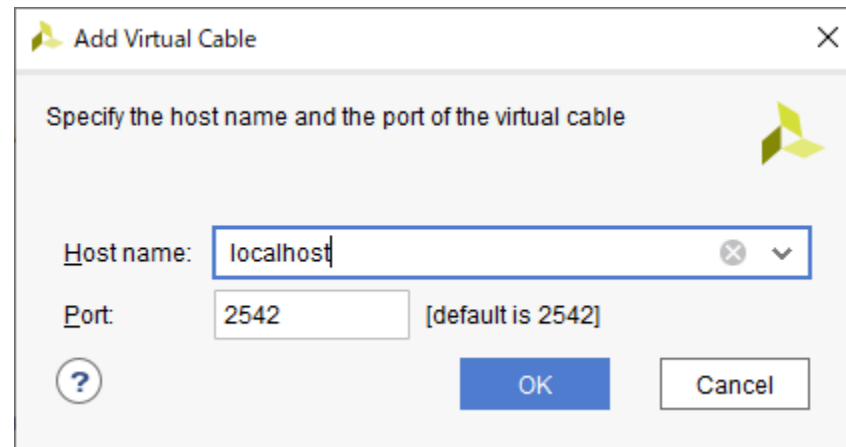
VivadoでOpenHardwareTarget



XVCを押す



localhost 2542 と入力



Add Virtual Cable

Specify the host name and the port of the virtual cable

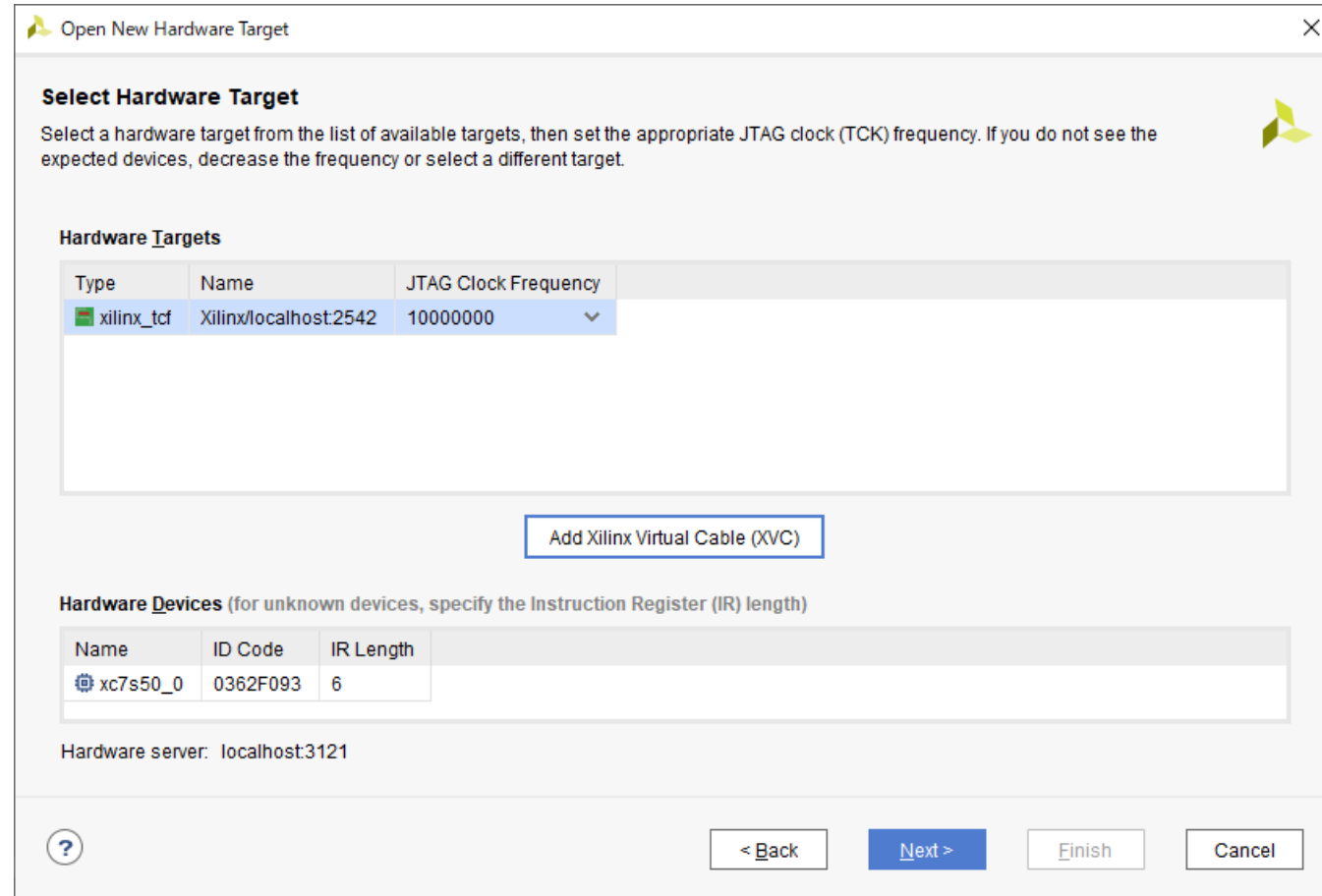
Host name: localhost

Port: 2542 [default is 2542]

?

OK Cancel

VivadoからMITOUJTAGに接続できる



XDCでの温度計測や書き込みが可能

The screenshot displays the Vivado 2022.2 Hardware Manager interface. The top menu bar includes File, Edit, Tools, Reports, Window, Layout, View, and Help. The main window is titled "HARDWARE MANAGER - localhost:xlinc_tcf/xilinx/localhost2542". A green status bar at the top indicates "There are no debug cores. Program device Refresh device".

The left sidebar shows the "Hardware" tree with the following structure:

- localhost (1) - Connected
- xlinc_tcf/xilinx/localhost2542 (1) - Open
 - xc7s50_0 (1) - Programmed
 - XADC (System Monitor)

The "Hardware Device Properties" window for xc7s50_0 shows the following details:

- Name: xc7s50_0
- Part: xc7s50
- ID code: 0362F093
- IR length: 6
- Status: Programmed
- Programming file: do.runs/impl_1/design_1_wrapper...

The main dashboard, titled "dashboard_1", displays a graph for "XADC (xc7s50_0)" showing "Temp 43.2°C". The graph plots temperature over time, with the x-axis labeled "Time (HH:MM:SS)" and the y-axis showing temperature values from 30 to 42.5. A "Program Device" dialog box is overlaid on the graph, indicating "Programming the device..." with a progress bar at 29%. The dialog includes "Background" and "Cancel" buttons.

The bottom section shows the "Tcl Console" with the following output:

```
refresh_hw_device: Time (s): cpu = 00:00:07 ; elapsed = 00:00:08 . Memory (MB): peak = 3286.801 ; gain = 2174.604
set_property PROBES.FILE {} [set_hw_devices xc7s50_0]
set_property FULL_PROBES.FILE {} [set_hw_devices xc7s50_0]
set_property PROGRAM.FILE {D:/ha1tou/np1116/sp7camera/Vivado/vivado/runs/impl_1/design_1_wrapper.bit} [set_hw_devices xc7s50_0]
program_hw_devices [set_hw_devices xc7s50_0]
```

The console also shows "Programming the device..." at the bottom.